

Comprehensive Planning

Guiding Community Growth

Brian Harner, Chair, Arlington Civic Federation Planning and Zoning Committee

- Choosing our direction

Arlington's 2050 Initiative seeks community input on county's future

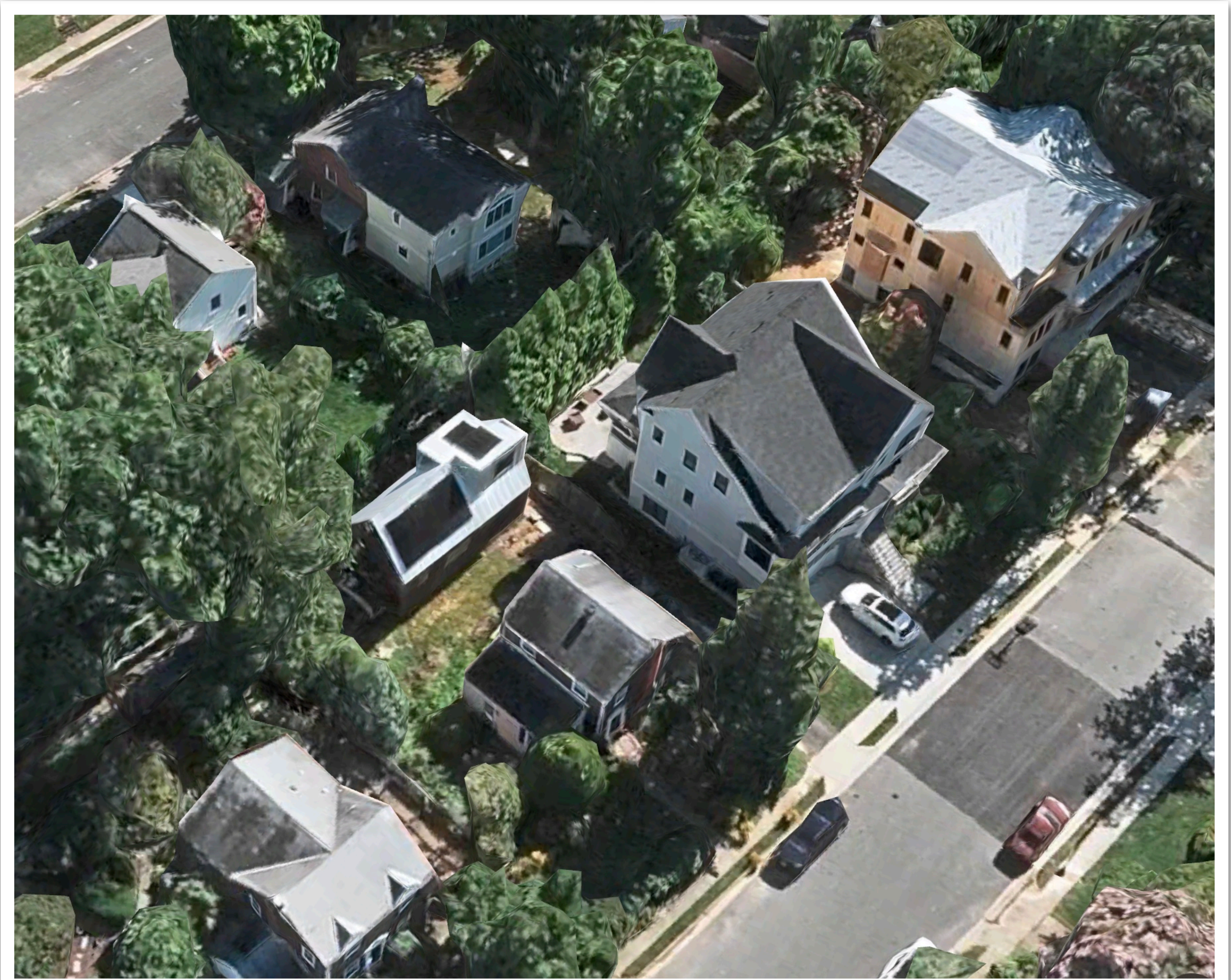
By Dan Egitto

Published August 19, 2024 at 3:45PM



Arlington 2050 community outreach (courtesy of Arlington County)

- Housing replacement



Rock Spring neighborhood

- **Historic context**



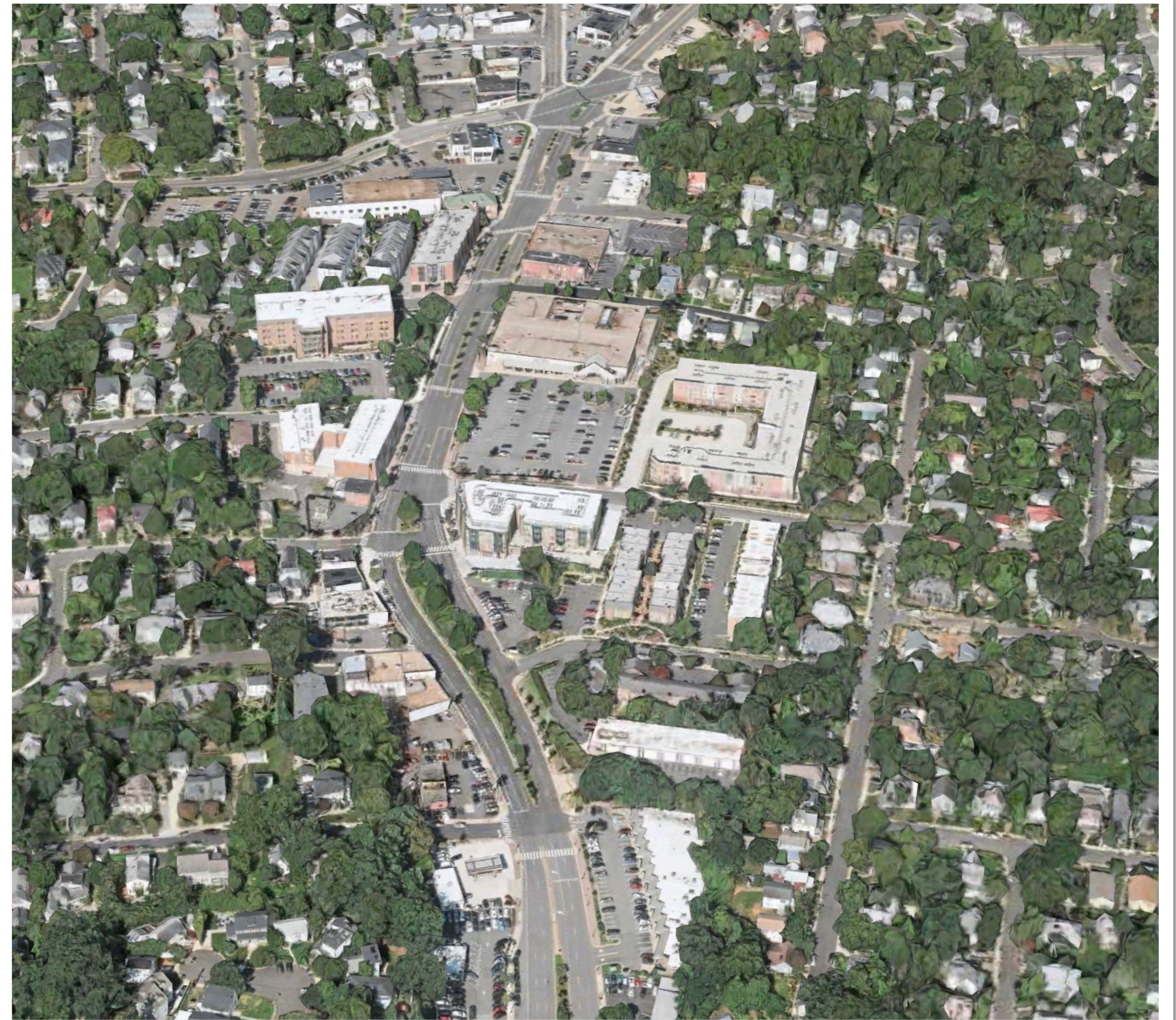
Maywood neighborhood

- Land use heritage



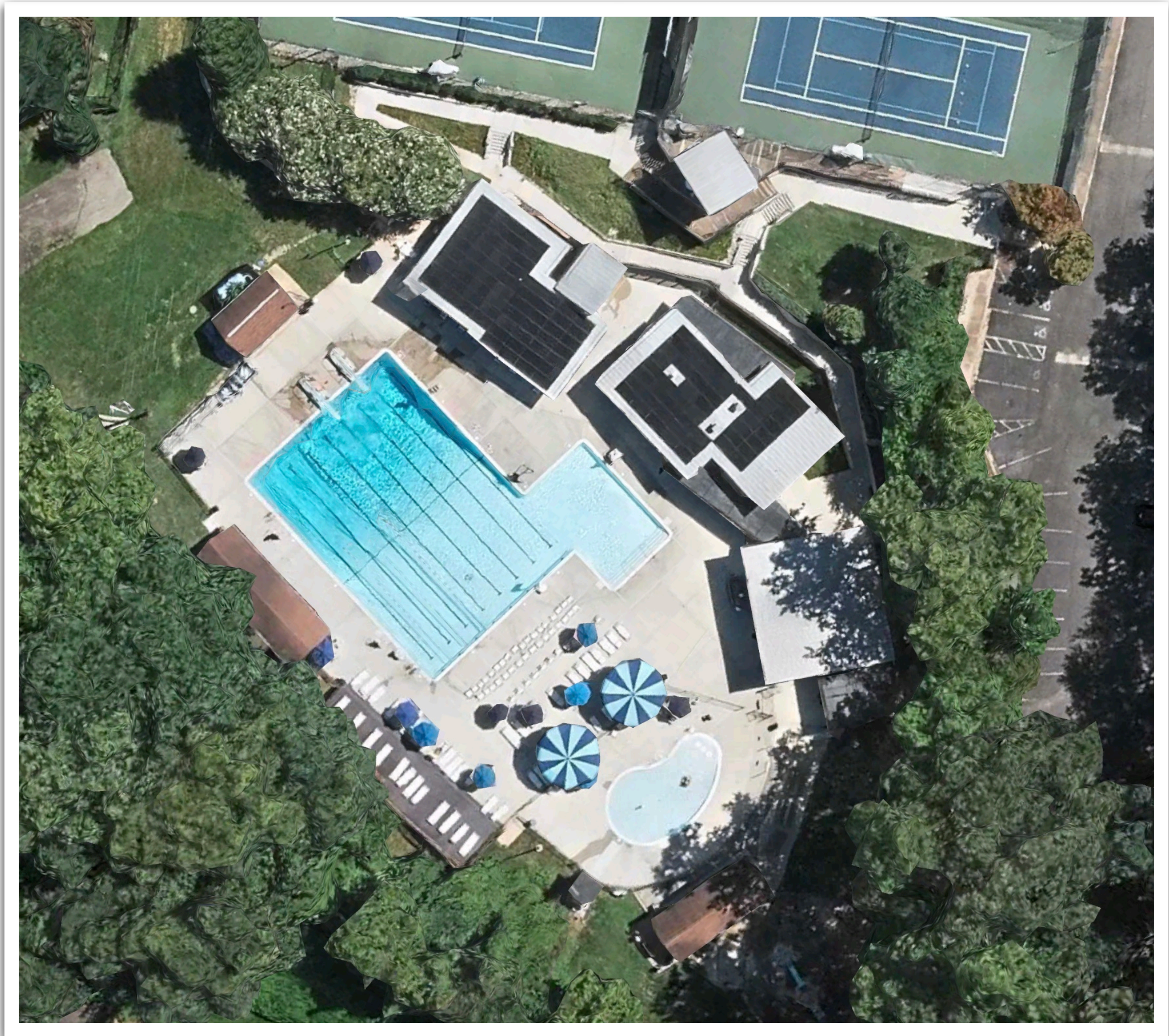
Filmore Gardens neighborhood

- **Linear corridor**



Langston corridor, Cherrydale neighborhood

- **Neighborhood recreation**



Arlington Forest Club

- **Community center**



Lyon Park

- Density transition



Ballston neighborhood

- **Density transition**



Clarendon neighborhood

- Urban core



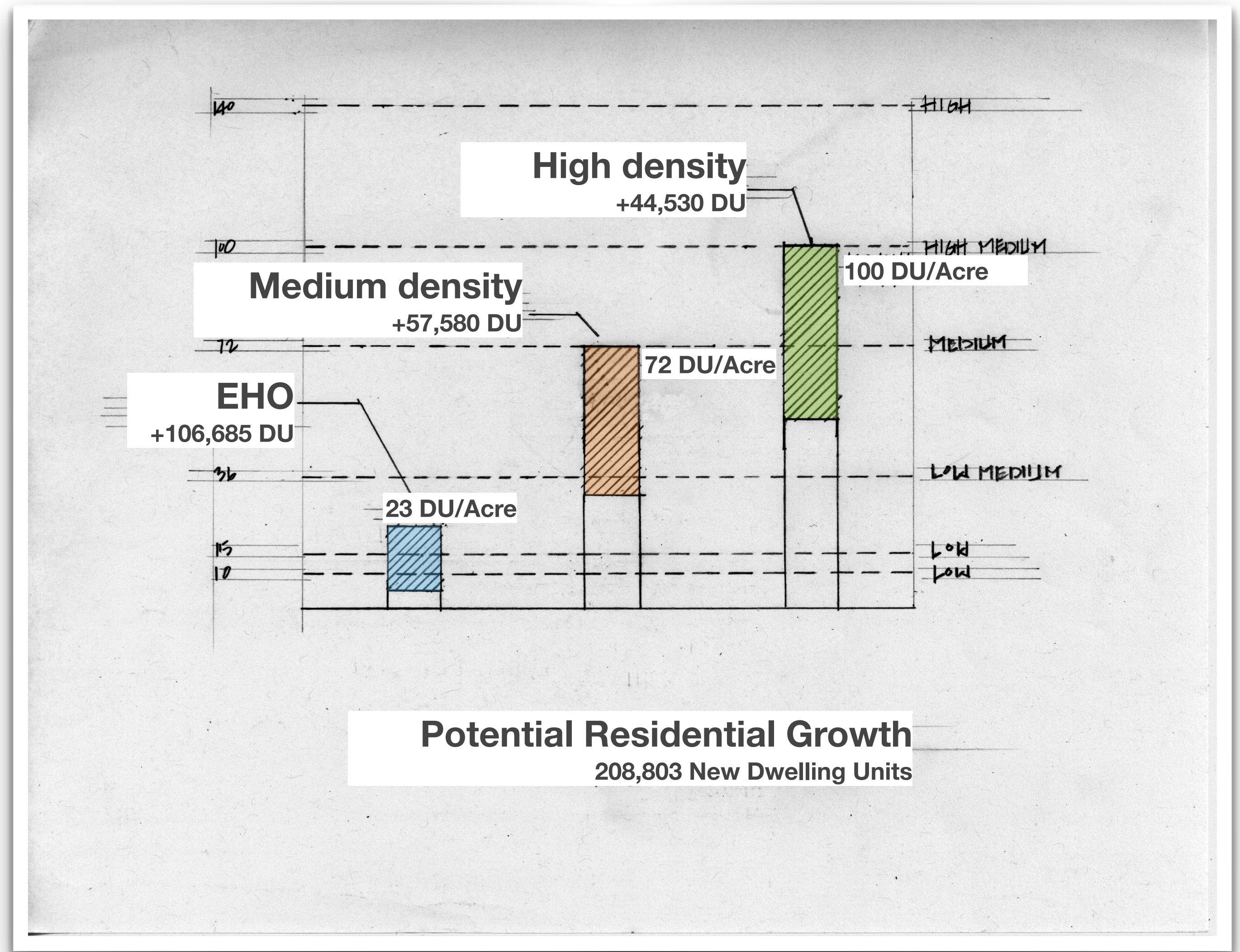
Rosslyn neighborhood

- Urban core



National Landing neighborhood

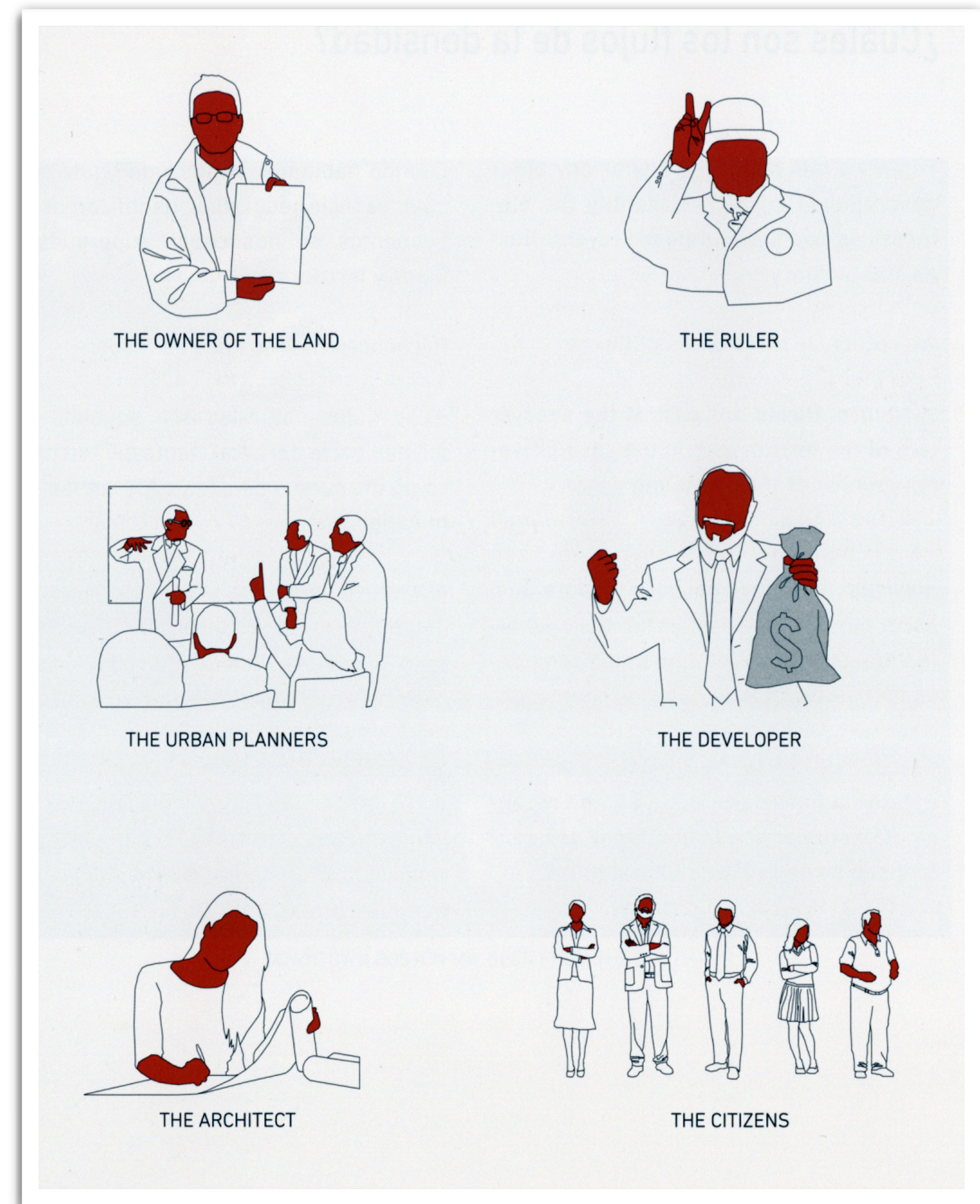
- **GLUP potential**



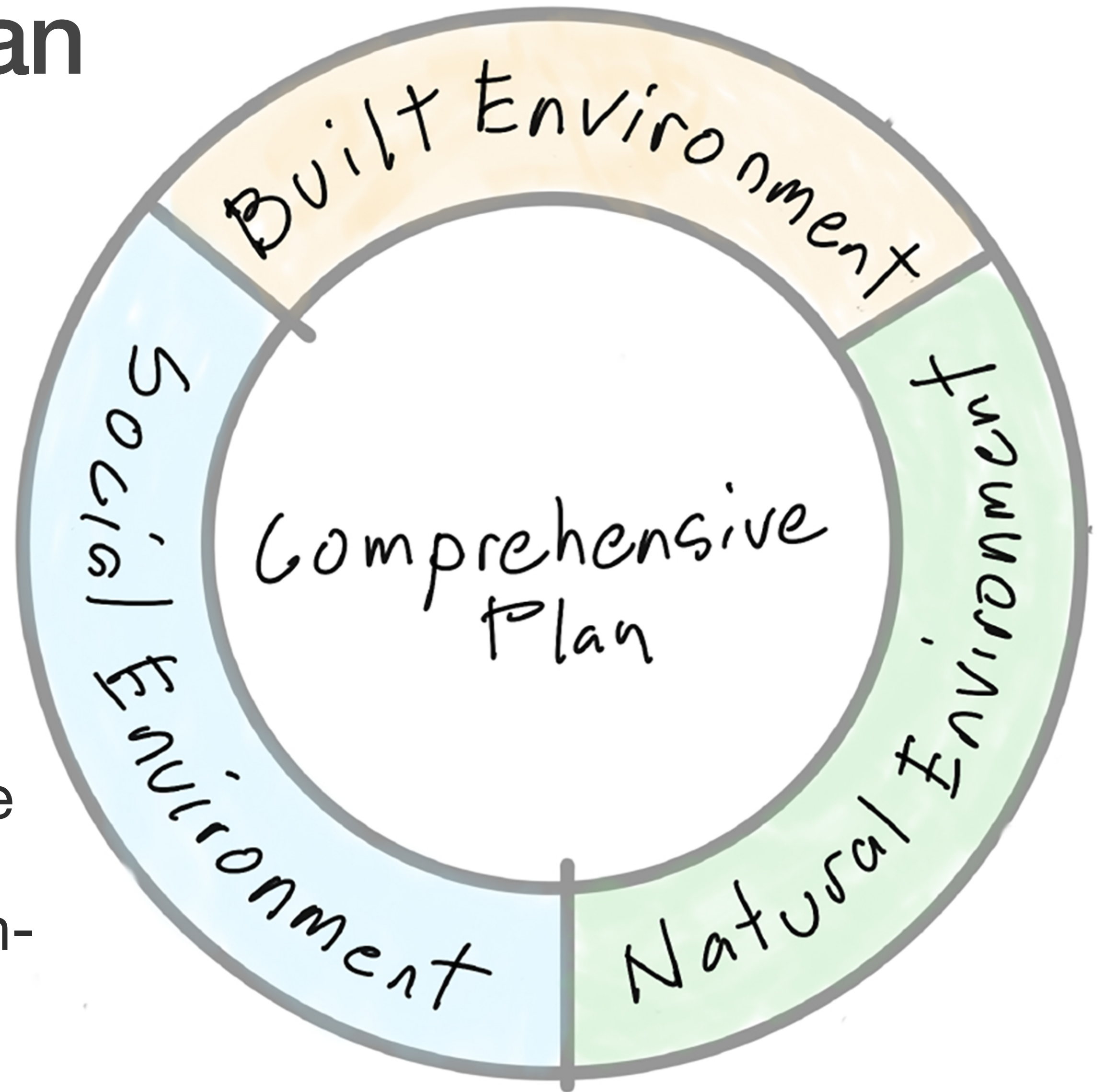
- Arlington's existing GLUP includes significant capacity for housing growth

- Agents of density

“The construction of a compact city requires that these traditional agents turn into more complex entities in such a way that individual aims – usually related to the dispersed city – are transformed into communal goals capable of attaining consensus and the common good.”



- **Arlington's Comp Plan**



“The dense city requires public-private partnerships to carry out the vision, participation of citizens at the decision-making levels, and a good dose of tolerance and social concern.”